

DPE3000 SERIES

Hydraulic Electric Pump

- Requires less energy, simple and easy to operate.
- Suitable for any industrial application.
- Handle and casing built together.
- Equipped with 10ft remote line.
- Carbon brushless motor, working frequently.

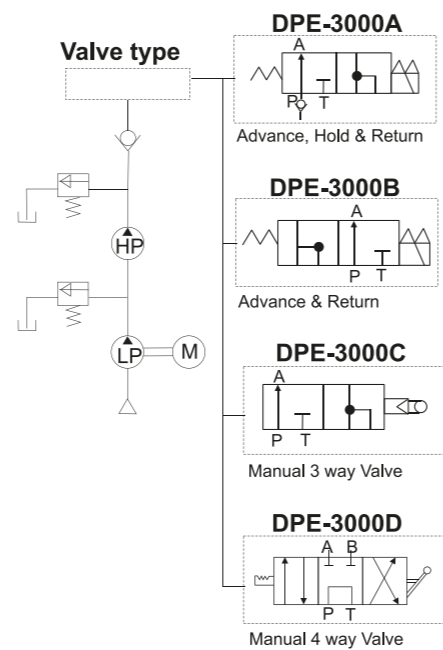



DPE3000APS

Custom build your Electric Pump:

DPE-3000 A

1. Valve
 - A. 3way / 2position built-in Solenoid Valve: Advance Hold Return
 - B. Remote Release Pressure: Advance Return (Ideal for punching, crimping and cutting)
 - C. 3way / 2position Manual Valve: Advance Hold Manual return
 - D. 4way / 3position Manual Valve: Advance Hold Manual Return





Electric Pump
Light Weight Pump

Reservoir Capacity	3000-6000 c.c
Flow at rated pressure	4-0.4 L
Motor Size	0.37 kW (0.5 hp)
Maximum Operating Pressure	700 bar

Control Valve

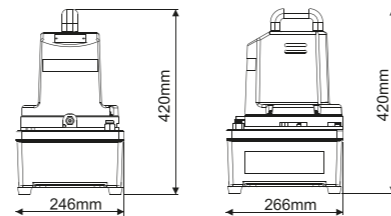
A single-acting cylinder must be powered by a pump with a 3-way solenoid (built-in) or manual valve.

Compare Model: DPE-3000APS (solenoid) or DPE-3000CPS (manual)

A double-acting cylinder must be powered by a pump with a 4-way valve.

Compare Model: DPE-3000D

Basic Pump Valve	Used with Cylinder		Valve Functions		
Manual 3 way Valve	•		•	•	•
Manual 4 way Valve		•	•	•	•

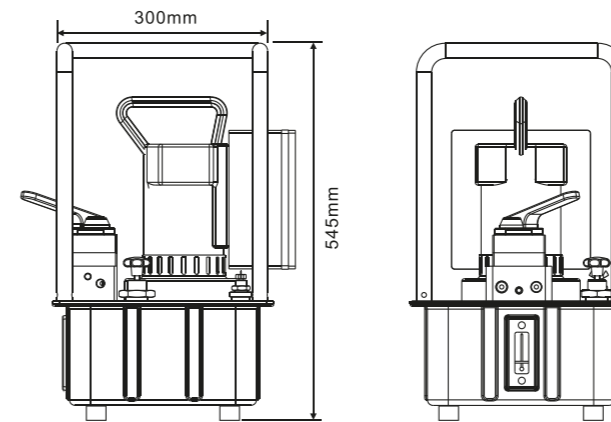


Model Number	Motor kW (hp)	Max. Pressure (psi) / (bar)	Pressure Rating		Output flow rate		dBA at Idle and 700 bar	Weight (include all) (kg)	Dimensions (mm)
			1 st stage (psi) / (bar)	2 nd stage (psi) / (bar)	1 st stage (L/min)	2 nd stage (L/min)			
DPE3000-50-220	0.37 (0.5)	10,000 (700)	200 (14)	10,000 (700)	4	0.4	85-90	14.5	250*270*400
DPE3000M-50-220	0.37 (0.5)	10,000 (700)	200 (14)	10,000 (700)	4	0.4	85-90	28	300*350*460

DPE554 SERIES

Hydraulic Electric Pump

- External adjustable pressure regulator.
- DPE554TWP-220-BS series: just use with Hydraulic Torque Wrench (see page 73).
- DPE554-50-220 series: just use with Hydraulic lift applications.
- 3M (10ft) remote motor control.
- Stainless frame easy to carry.



DPE554-50-220



Electric Pump

Industrial Application
Electric Pump

Reservoir Capacity	8-20 L
Flow at rated pressure	11.3-0.9 L
Motor Size	0.84kW (1-1/8 hp)
Maximum Operating Pressure	700 bar

Model Number	Rpm	dBA at Idle and 700 bar	Motor kW (hp)	Amp at 700 bar (A)	Flow rate @ 230VAC (L/min)				Oil tank (L)	Usable oil (L)	Weight (include all) (kg)
					0 bar	50 bar	350 bar	700 bar			
DPE554 Series	12000	80	0.84 (1-1/8)	25/110V 10.7/230V	11.3	7.1	1.2	0.9	8	7	32

DPE-2 SERIES

Hydraulic Electric Pump

- Two stage models for reduced cycle times and improved productivity.
- Easy to customize with modular accessory kits.
- User adjustable external relief valve with a factory set upper limit prevents system overload.
- Easy to read integrated oil level sight glass.
- Totally enclosed fan-cooled motors are ideal for outdoor use in many environments.



Electric Pump

Industrial Application
Electric Pump

Reservoir Capacity	20-60 L
Flow at rated pressure	10.5-1 L
Motor Size	1.5kW (2 hp)
Maximum Operating Pressure	700 bar

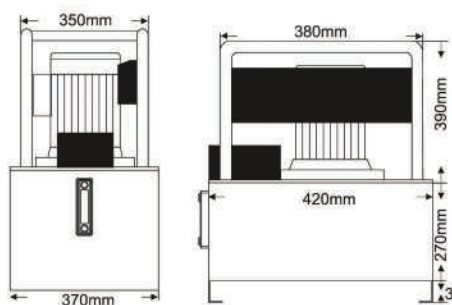
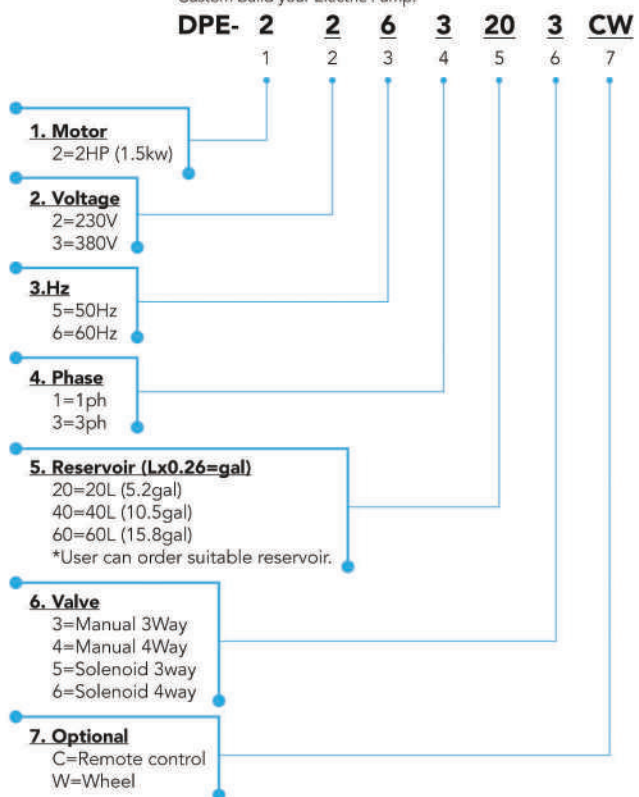


DPE-2

Optional



Custom build your Electric Pump:



Basic Pump Valve	Used with Cylinder	Valve Functions		
Manual 3 way Valve	•	•	•	•
Manual 4 way Valve	•	•	•	•

Model Number	Motor kW (hp)	Operation	Flow Rate		Pressure Rating		Rpm	dBA at Idle and 700 bar	Weight (20L reservoir no oil) (kg)
			1 st stage (L/min)	2 nd stage (L/min)	1 st stage (bar)	2 nd stage (bar)			
DPE-2	1.5 (2)	Two-stage	10.5	1	55	700	1725	70-79	55.5